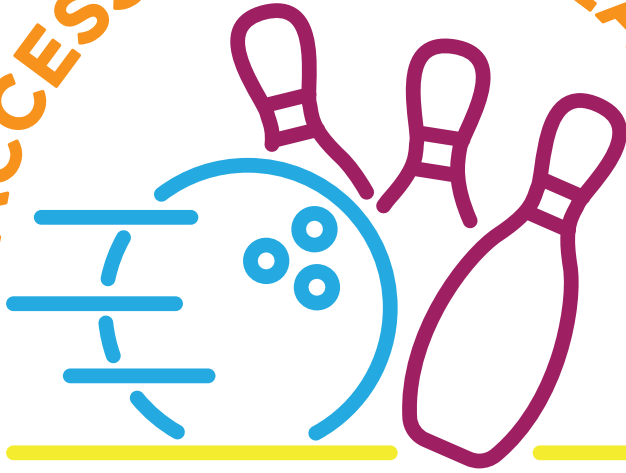


# ACCESSIBLE RECREATION



## BOWLING

— FALL 2022 —

### ◆ SESSION 1

Sept. 12-Oct. 3

### ◆ SESSION 2

Oct. 10-31

### ◆ SESSION 3

Nov. 7-28

#### FOR MORE INFORMATION

- Call Cyrus at 417-837-5808
- Visit [ParkBoard.org/AR](https://ParkBoard.org/AR)
- [Facebook.com/AccessibleRec](https://Facebook.com/AccessibleRec)



✉ MAIL REGISTRATIONS TO:  
**Accessible Rec Bowling Program**  
305 E. Talmage • Springfield, MO 65803



Enjoy bowling while  
you meet new friends  
at **Park Board Bowling!**

This program consists of four-week sessions. Register for a full session or one game at a time. For bowlers ages 16 years and up with a disability. Open bowling and league play are offered in the fall for fun-filled competition!

#### TIME

**Mondays, 3:30-5:30 p.m.**

#### LOCATION

**Enterprise Park Lanes**  
1625 S. Enterprise

#### FEE

**\$10/Week**

two games with shoes

-OR-

**\$40/Session**

two games/week with shoes



Transportation is not currently available. Make checks payable to Springfield-Greene County Park Board.

# Bowling Registration Form

## PARTICIPANT INFORMATION

PARTICIPANT NAME

BIRTHDATE

STREET ADDRESS

*Please select one:*

LEAGUE BOWLING

OPEN BOWLING

ZIP

PHONE

EMAIL ADDRESS

PARTICIPANT DIAGNOSIS

WHAT ASSISTANCE/ACCOMMODATIONS ARE NEEDED TO PARTICIPATE IN BOWLING?

HELP US GET TO KNOW YOU—BEHAVIORS, SOCIALIZATION, DIET, ALLERGIES, SEIZURES, ETC.

EMERGENCY MEDICAL INFORMATION/ DIRECTIVES

GUARDIAN NAME

GUARDIAN PHONE

## EMERGENCY CONTACT INFORMATION

NAME

NAME

RELATION

HOME PHONE

CELL PHONE

RELATION

HOME PHONE

CELL PHONE

## PAYMENT OPTIONS

*Make checks payable to Springfield-Greene County Park Board.*

*Please select one:*

WEEKLY PAYMENT (\$10/week)

-or-

SESSION PAYMENT (\$40/Session)

*Initial please*

\_\_\_\_\_ I give my permission for this participant to wait at the bowling alley unsupervised until I arrive to pick them up.

\_\_\_\_\_ This participant has permission to be photographed or videotaped for program promotion.

**READ & SIGN:** I hereby waive and release the Springfield-Greene County Park Board and its representatives from claims for damages and/or injuries incurred while participating in or as a spectator of the Springfield-Greene County Park Board activities.

SIGNATURE (PARENT OR GUARDIAN)

DATE

OFFICE USE ONLY

PAYMENT: \$

DATE RECEIVED:

RECEIVED BY:

RECEIVED ON:

RECEIVED BY:

RECEIPT #:

CASH

CHECK [CHECK #: ]

CREDIT

VISA

MC

DISCOVER

AMEX